

## Embrace the Nature of Living, in Qualicum Beach, BC

An exclusive collection of 12 new custom homes by Bayshore Construction & CA Design. Just a short walk from downtown Qualicum Beach, nestled amongst lush parkland, and connected by manicured trail systems. Parkside is the perfect blend of both privacy and accessibility. **SELLING NOW FROM \$525,000**

± DBM

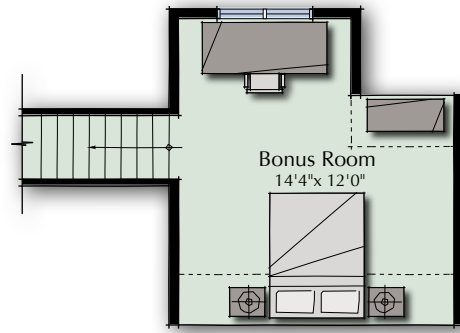
JAMIE LARSON

dbm-realty.com  
250 240 7584  
jamie@dbm-realty.com

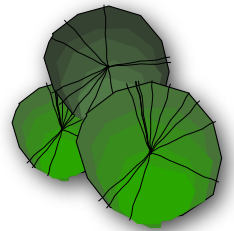
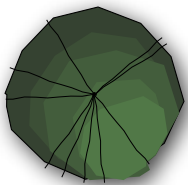
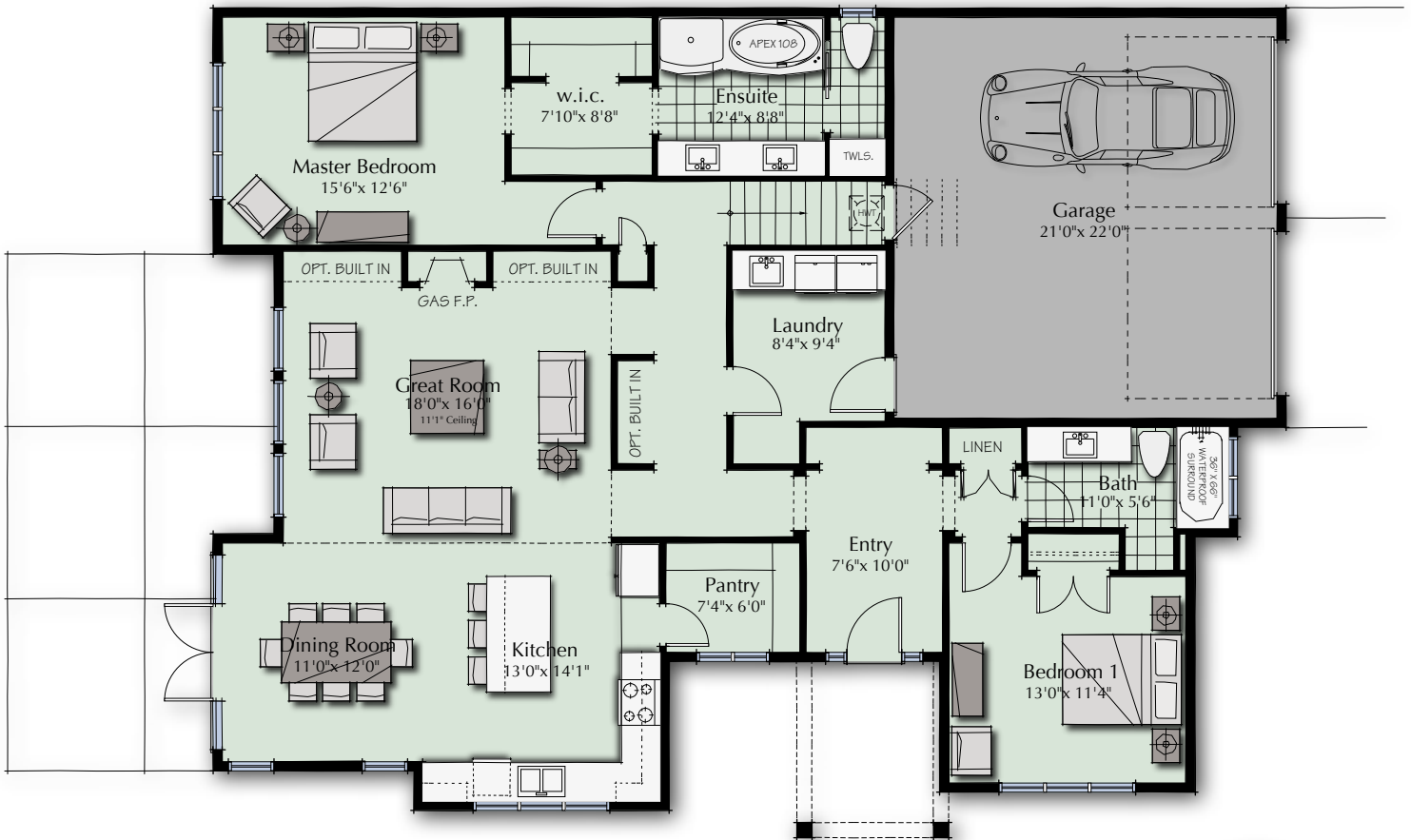
184c West Second Ave  
Qualicum Beach BC v9k 2t5



PARKSIDE  
qualicum beach



Bonus Room - 208 sq. ft.



# THE GARIBALDI

Lot 12 | Main Floor - 1802 sq. ft.



JAMIE LARSON

dbm-realty.com  
250 240 7584  
jamie@dbm-realty.com

184c West Second Ave  
Qualicum Beach BC V9K 2T5



PARKSIDE  
qualicum beach



FRONT ELEVATION

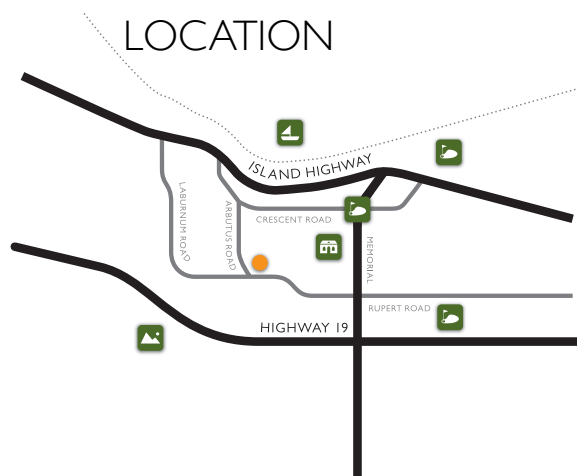


REAR ELEVATION

SITE PLAN



LOCATION



THE GARIBALDI  
Lot 12 | Elevations

- 2 BED + BONUS ROOM
- MAIN LEVEL LIVING
- INDOOR | OUTDOOR LIVING
- LARGE COVERED ENTRY
- RAISED GREATROOM CEILING
- CUSTOM COLOR SCHEMES
- OPTIONAL FIREPLACE BUILT-INS
- LARGE ISLAND KITCHEN
- WALK IN PANTRY
- OPTIONAL OFFICE NICHE
- OUTDOOR LIVING AREA
- OPT. OUTDOOR FIREPLACE
- OPT. OUTDOOR KITCHEN

± DBM

JAMIE LARSON

dbm-realty.com  
250 240 7584  
jamie@dbm-realty.com

184c West Second Ave  
Qualicum Beach BC V9K 2T5

PARKSIDE  
qualicum beach

# QUALITY FEATURES & FINISHES

## INTERIORS

- Custom colour schemes selected for each home
- Wide Plank, Wire Brushed, Oak hardwood flooring in Great Room, Dining Room and Kitchen
- Low profile, 100% Nylon carpet in bedrooms and den\* (some homes)
- Satin nickel lever hardware by Emtek
- Porcelain tile flooring in Entry, Laundry Room, and Baths
- Clean lined 6" baseboards and door / window trim throughout
- 9' ceilings (main floor) with 11' ceilings\* in Great Room (some homes)
- Natural gas fireplace with natural stone\*\* tile surround

## KITCHENS

- G.E. Profile Stainless steel hoodfan
- G.E. Profile Stainless steel dishwasher
- Porcelain mosaic backsplash to underside of cabinets
- Custom designed shaker style kitchen cabinets
- Halogen under-the-cabinet task lighting
- Granite kitchen countertops
- Double bowl stainless steel sink
- In-sink waste disposal
- GROHE single lever stainless steel faucet with integral vegetable spray
- Deep pot drawers
- Modern recessed pot lighting in kitchen

## MAIN BATHS

- Soaker tub/shower\* (some homes) by Hytec
- Porcelain floor tiles
- Contemporary polished chrome faucets by GROHE
- Low flush, soft close toilet by Toto
- Pressure balanced polished chrome shower control by GROHE

## ENSUITES

- 5'-0" Soaker Tub by Hytec\* (some homes)
- Natural honed travertine\*\* floor tiles
- Walk-in, tiled shower with polished chrome/ glass shower door
- Polished chrome wall spouts and wide spread lever faucets by GROHE
- Low flush, soft close toilet by Toto
- Pressure balanced polished chrome shower control by GROHE
- Dual above counter lavatories\* (some homes)

## ENERGY WISE

- Heat Pump by Carrier
- Energy efficient, double glazed vinyl windows
- Hot water on demand

## SECURITY AND CONVENIENCE

- All homes pre-wired for security system
- Roughed-in for central vacuum system
- Hard-wired smoke detectors in all homes
- Third Party Warranty Insurance, providing coverage up to 2 / 5 / 10 years



JAMIE LARSON

dbm-realty.com  
250 240 7584  
jamie@dbm-realty.com

184c West Second Ave  
Qualicum Beach BC v9k 2t5



PARKSIDE  
qualicum beach